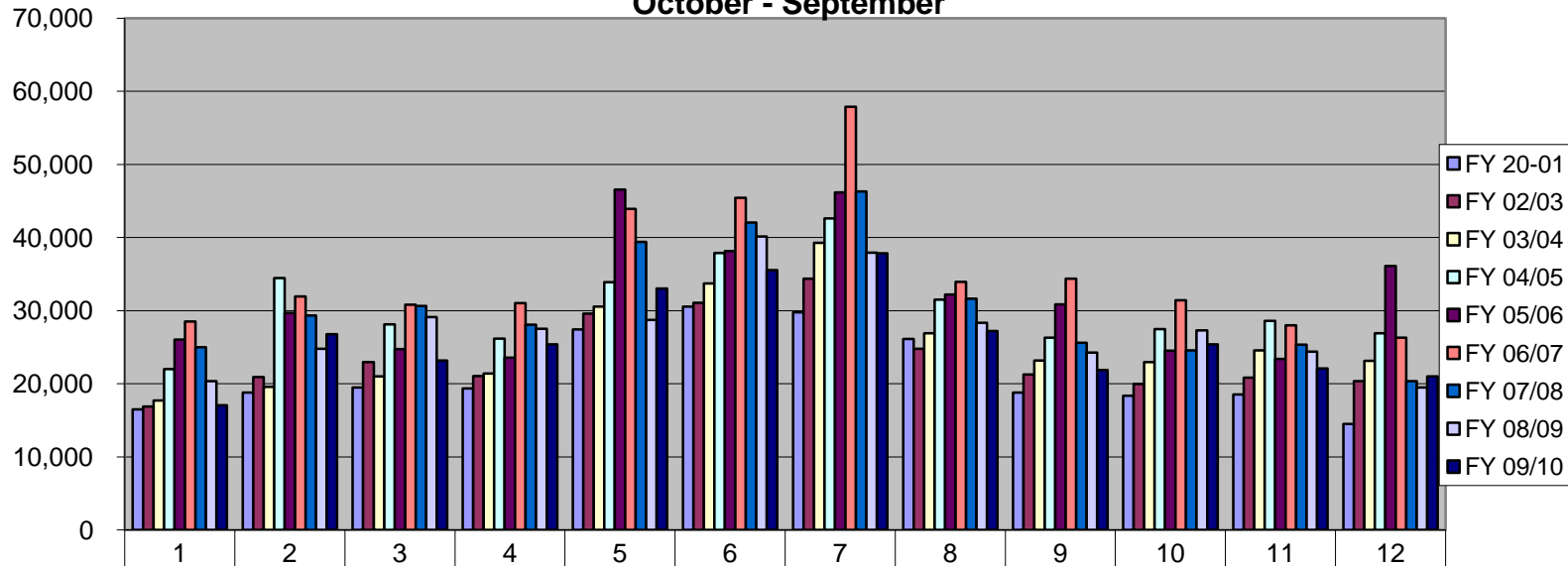


Hernando County Collection of Local Option Tourist Tax October - September



	1	2	3	4	5	6	7	8	9	10	11	12
FY 20-01	16,506	18,786	19,490	19,354	27,406	30,551	29,757	26,144	18,798	18,364	18,511	14,498
FY 02/03	16,868	20,919	22,944	21,045	29,612	31,080	34,380	24,765	21,259	19,982	20,816	20,344
FY 03/04	17,718	19,592	20,995	21,412	30,558	33,714	39,280	26,916	23,181	22,958	24,542	23,111
FY 04/05	22,008	34,452	28,136	26,153	33,895	37,881	42,625	31,505	26,312	27,477	28,578	26,912
FY 05/06	26,049	29,682	24,754	23,584	46,579	38,148	46,193	32,220	30,868	24,540	23,412	36,090
FY 06/07	28,515	31,942	30,821	31,019	43,922	45,447	57,881	33,916	34,380	31,429	27,971	26,309
FY 07/08	24,991	29,354	30,618	28,088	39,401	42,073	46,316	31,630	25,610	24,564	25,333	20,345
FY 08/09	20,353	24,775	29,134	27,520	28,735	40,155	37,911	28,326	24,270	27,318	24,402	19,490
FY 09/10	17,073	26,763	23,183	25,397	33,040	35,530	37,822	27,209	21,864	25,369	22,088	21,017